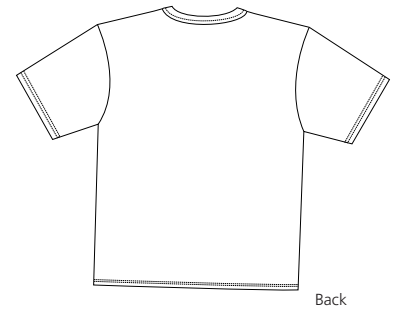
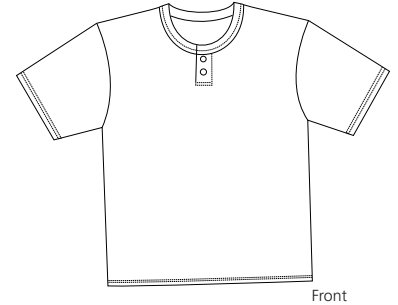


Short Sleeve Henley

Sport-Tek
By Port Authority®



T210

- * 2-button placket * Dyed-to-match buttons * 5.8-ounce * 60/40 cotton/poly
- * Rib knit neck * Double-needle sleeve and bottom hem

Care Instructions:

Machine wash cold, gentle cycle.
Only non-chlorine bleach when needed.
Tumble dry low. Do not iron.

Finished Measurements in Inches

Size	XS	S	M	L	XL	2XL	3XL	4XL
Width	16	17.5	19.5	21.5	23.5	25.5	27.5	29.5
Length	27	28	29	30	31	32	33	34
Sleeve	8	8.5	9	9.5	10	10.5	11	11.5
Neck	6	6.5	7	7.5	8	8.5	9	9.5
Placket	4	4	4	4	4.25	4.25	4.5	4.5

Neck width measured from seam to seam. Chest width measured 1" below armhole. Placket measured by length.
Body length measured from high point shoulder to hem. Sleeve length measured from shoulder seam to hem.

Color Chart

Colors	Ash	Black	Forest	Heather Grey	Navy	Purple
Textile PMS	No Match	19-4203TC	19-5513TC	No Match	19-3921TC	19-3847TC
General PMS	No Match	Process Black	567C	No Match	533C	2617C
Colors	Red	Royal	White			
Textile PMS	19-1764TC	19-4057TC	11-0601TC			
General PMS	187C	541C	No Match			

Colors

	Ash
	Black
	Forest
	Heather Grey
	Navy
	Purple
	Red
	Royal
	White

Please Note:

Colors shown are approximate and for reference only. For closest match see PMS colors, or for exact match, returnable samples and grommeted samples are available.